

Presentation for

PITTSFIELD SCHOOL DISTRICT

Programming and Feasibility Study
Pittsfield, NH

Board Presentation

June 16, 2022





1 Existing Conditions

Project Goals and Objectives

Pittsfield Elementary School

Pittsfield Middle High School

Available Space at PMHS Without High School Program

2 Consolidation Analysis/Conceptual Design

Consolidation Analysis Site Plan

Consolidation Analysis Floor Plans

Summary of Findings

3 Questions & Answers

Agenda



HARRIMAN

Project Goals and Objectives

Pittsfield Elementary School

Pittsfield Middle High School

Available Space at PMHS Without High School Program



Existing Conditions

PROJECT GOALS AND OBJECTIVES

EXISTING CONDITIONS

GOAL OF THE STUDY:

To investigate whether the **Elementary Program could be consolidated with the Middle School Program** within the existing Middle High School building and site **if the High School Program were to be moved out.**

PARAMETERS OF THE STUDY:

- Important for the school to **keep grade levels together** and **defined separation between age groups**
- **Existing SPED program** needs to stay as existing to **serve the current 40% population of students with special needs**
- The solution provided should be **within the existing building footprint and infrastructure** (no addition to the building)
- **Multiple nurse areas** are requested to serve the population and isolate kids by age grouping

PES EXISTING SITE PLAN

EXISTING CONDITIONS



SITE NOTES

- ① LOWER FIELD - PLAYGROUND
3RD, 4TH & 5TH GRADE
SHARED WITH MIDDLE HIGH
- ② SERVICE PARKING/ DELIVERIES
9 PARKING SPACES
- ③ BUS LOOP (5 BUSES + 1 SMALL)
- ④ BASKETBALL HOOP
- ⑤ PARALLEL PARKING (10 SPACES)
- ⑥ STAFF & VISITORS PARKING
(43 PARKING SPACES)
- ⑦ PARENT DROP OFF/ PICK UP
30% STUDENTS
- ⑧ KINDERGARTEN, 1ST & 2ND
GRADE PLAYGROUND
- ⑨ NATURAL PLAY AREA P-K
- ⑩ HOPSCOTCH & 4-SQUARES
MARKINGS
- ⑪ PLAY AREA
- ⑫ EMERGENCY ACCESS
- ⑬ NATURE TRAIL CLASSROOM

PES EXISTING FIRST FLOOR PLAN

EXISTING CONDITIONS

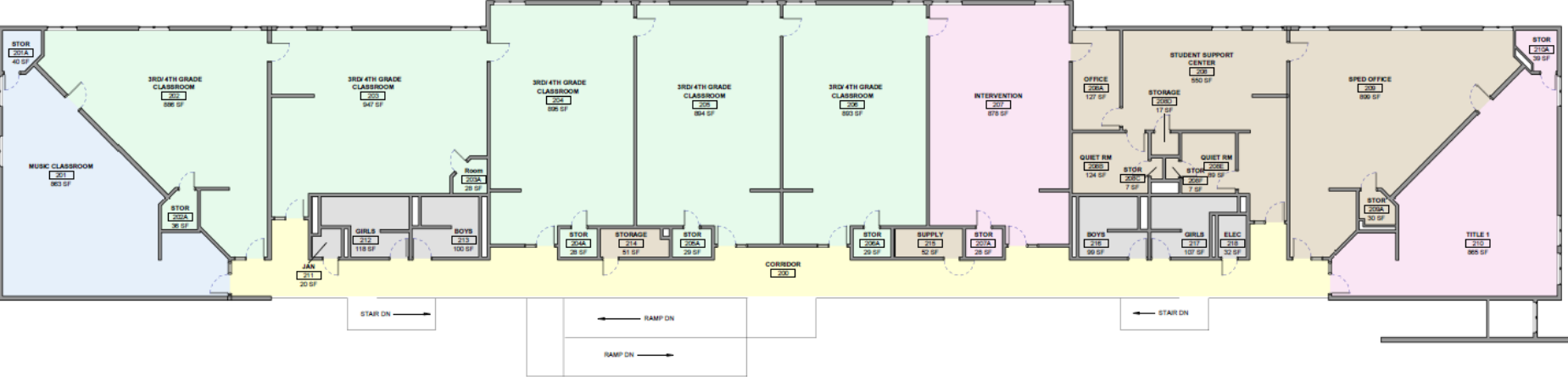


LEGEND

- GENERAL CLASSROOMS
- SPECIALIZED CLASSROOMS
- SPECIAL SERVICES CLASSROOMS
- CORE AREAS
- EDUCATIONAL SUPPORT AREAS
- FACILITY SUPPORT AREAS
- CIRCULATION

PES EXISTING SECOND FLOOR PLAN

EXISTING CONDITIONS



- LEGEND**
- GENERAL CLASSROOMS
 - SPECIALIZED CLASSROOMS
 - SPECIAL SERVICES CLASSROOMS
 - CORE AREAS
 - EDUCATIONAL SUPPORT AREAS
 - FACILITY SUPPORT AREAS
 - CIRCULATION

PMHS EXISTING SITE PLAN

EXISTING CONDITIONS



SITE NOTES

- ① LOWER FIELD
SHARED WITH ELEMENTARY
- ② SERVICE YARD
- ③ BASKETBALL HOOP
- ④ VOLLEYBALL COURT
- ⑤ STUDENT (35), STAFF &
VISITORS PARKING
85 PARKING SPACES
- ⑥ STAFF & VISITORS PARKING
51 PARKING SPACES
- ⑦ SAU 51 & PITTSFIELD
HEAD START PARKING
24 PARKING SPACES
- ⑧ PARENT DROP OFF/ PICK UP
40-50% STUDENTS
- ⑨ (5) BUS DROP/ PICK UP
- ⑩ (2) STORAGE/ SHOPS
- ⑪ STEEP NON VEHICULAR
CONNECTION TO PARKING LOT
- ⑫ SKATE PARK
- ⑬ PICNIC TABLE

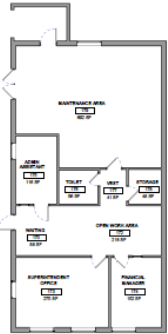
PMHS EXISTING LOWER LEVEL PLAN

EXISTING CONDITIONS



LEGEND

- GENERAL CLASSROOMS
- SPECIALIZED CLASSROOMS
- SPECIAL SERVICES CLASSROOMS
- CORE AREAS
- EDUCATIONAL SUPPORT AREAS
- FACILITY SUPPORT AREAS
- CIRCULATION



PMHS EXISTING UPPER LEVEL PLAN

EXISTING CONDITIONS

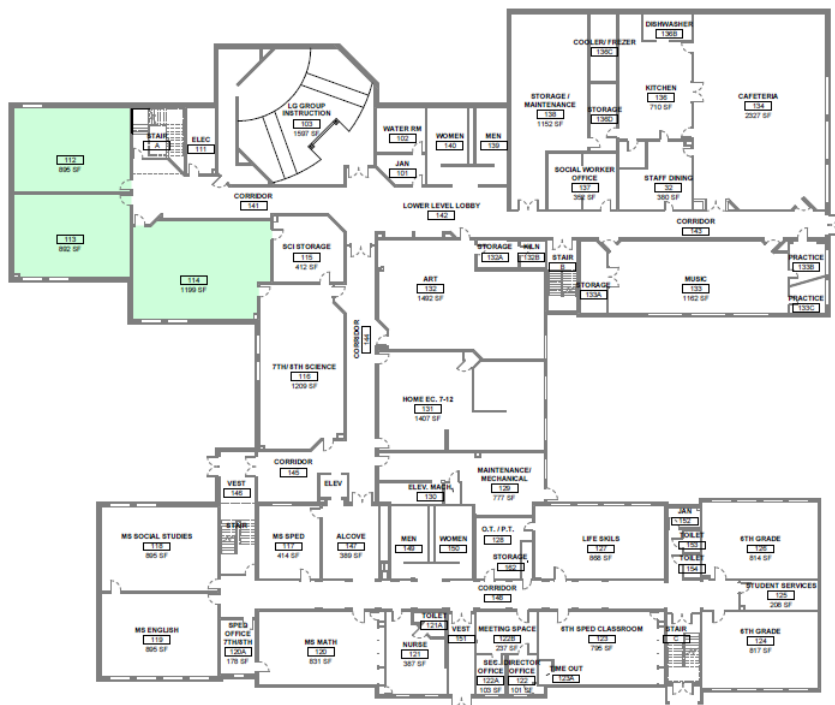


LEGEND

- GENERAL CLASSROOMS
- SPECIALIZED CLASSROOMS
- SPECIAL SERVICES CLASSROOMS
- CORE AREAS
- EDUCATIONAL SUPPORT AREAS
- FACILITY SUPPORT AREAS
- CIRCULATION

AVAILABLE SPACE AT PMHS WITHOUT HS PROGRAM

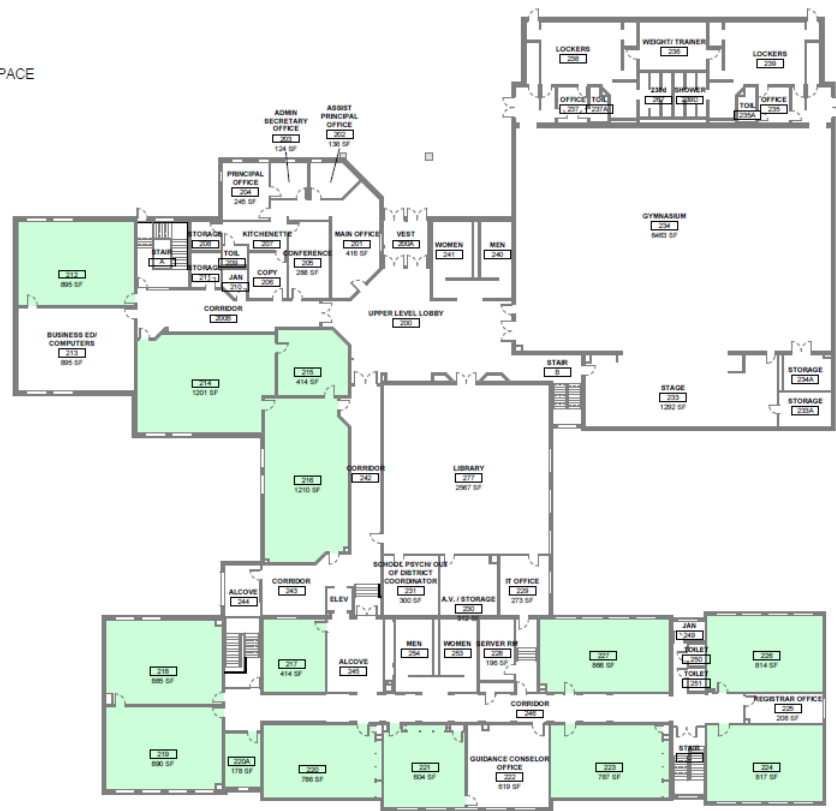
EXISTING CONDITIONS



1 LOWER LEVEL
SCALE: 1/8" = 1'-0"

LEGEND

AVAILABLE SPACE



2 UPPER LEVEL
SCALE: 1/8" = 1'-0"

PMHS AVAILABLE SPACE PLAN
(WITHOUT HS PROGRAM)



Consolidation Analysis Site Plan
Consolidation Analysis Floor Plans
Summary of Findings

Consolidation Analysis/ Conceptual Design

PROPOSED ES/MS SITE PLAN

CONSOLIDATION ANALYSIS/CONCEPTUAL DESIGN



PROPOSED SITE NOTES

- ① CREATE SIDE WALK FOR PARENT DROP OFF
- ② P-K EXIT
- ③ P-K, KINDERGARTEN PLAYGROUND MODIFY GRADE AND FENCING AND RETAINING WALL REQUIRED
- ④ SHARED PLAY FIELD (1-8 GRADE) ADA CONSIDERATIONS REQUIRED (E.G. SITE RAMP)
- ⑤ 1-5 GRADE PLAYGROUND SITE GRADING REQUIRED
- ⑥ POSSIBLE BUS LOOP. REVIEW GRADING AND TRAFFIC PATTERN THROUGH SAU PARKING LOT. REQUIRE REMOVAL OF SKATE PARK.
- ⑦ FENCING

← POSSIBLE QUEING AND PARENT DROP OFF. REQUIRES ELIMINATING 30 PARKING SPACES AND ADDING A SIDEWALK ALONG THE NORTH EDGE OF THE PARKING AREA.

⋯ INDICATES POSSIBLE PARENT DROP OFF AREA

PARKING:

CONFIRM NUMBER OF PARKING SPACES REQUIRED. WE ARE ASSUMING 130 STAFF PARKING SPACES, 15 SAU SPACES AND 15 VISITOR. WHICH WOULD REQUIRE 160 SPACES.

160 APPROXIMATE NUMBER OF PARKING SPACES WITHOUT MODIFIED PARENT DROP OFF.

130 APPROXIMATE NUMBER OF PARKING SPACES WITH MODIFIED PARENT DROP OFF.

CURRENTLY MISSING PROGRAMS:

HARDSCAPE PLAY AREAS

6-8 GRADE OUTDOOR PLAY AREA

OUTDOOR CLASSROOMS

NATURE TRAILS

PROPOSED ES/MS LOWER LEVEL FLOOR PLAN

CONSOLIDATION ANALYSIS/CONCEPTUAL DESIGN

LEGEND

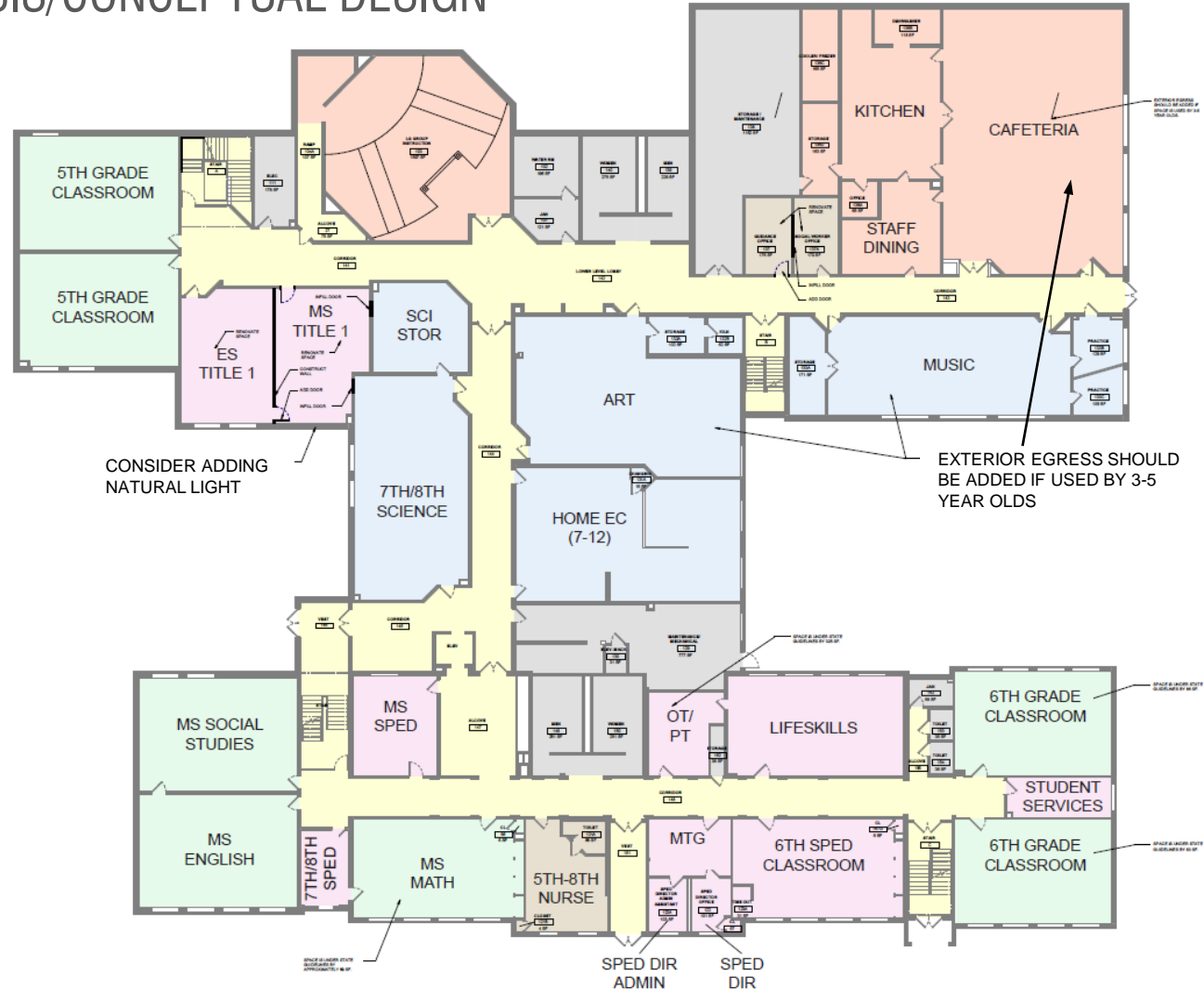
- GENERAL CLASSROOMS
- SPECIALIZED CLASSROOMS
- SPECIAL SERVICES CLASSROOMS
- CORE AREAS
- EDUCATIONAL SUPPORT AREAS
- FACILITY SUPPORT AREAS
- CIRCULATION

NOTES

1. DOOR TO EXTERIOR WILL NEED TO BE ADDED TO CAFETERIA, ART, AND MUSIC IF USE BY STUDENTS AGES 3-5 YEARS OLD.
2. ONE ART ROOM, MUSIC, GYM AND CAFETERIA OKAY FOR ES/MS BUT WILL DRIVE THE SCHEDULE.
3. ALL SPACES SHOWN ON PLAN ARE PART OF THE ES/MUS COMBINED PROGRAM. THE FOLLOWING REQUIRED PROGRAM SPACES ARE MISSING AND SPACE IS NOT AVAILABLE FOR THEM WITHIN THE EXISTING BUILDING:

- (2) **KINDERGARTEN CLASSROOMS** WITH BATHROOMS AT 1,000 SF EACH
- (1) **FIRST GRADE CLASSROOM** WITH BATHROOM AT 900 SF
- (3) **ES SPED CLASSROOMS** AT 450-500 SF EACH
- **INTERVENTION/IN SCHOOL SUSPENSION ROOM** 300 SF
- **CODING CLASSROOM** 900 SF
- **MS ASSISTANT PRINCIPAL OFFICE** 150 SF

MISSING PROGRAM SPACES: TOTAL APPROX. 5,750 SF



PROPOSED ES/MS UPPER LEVEL FLOOR PLAN

CONSOLIDATION ANALYSIS/CONCEPTUAL DESIGN

LEGEND

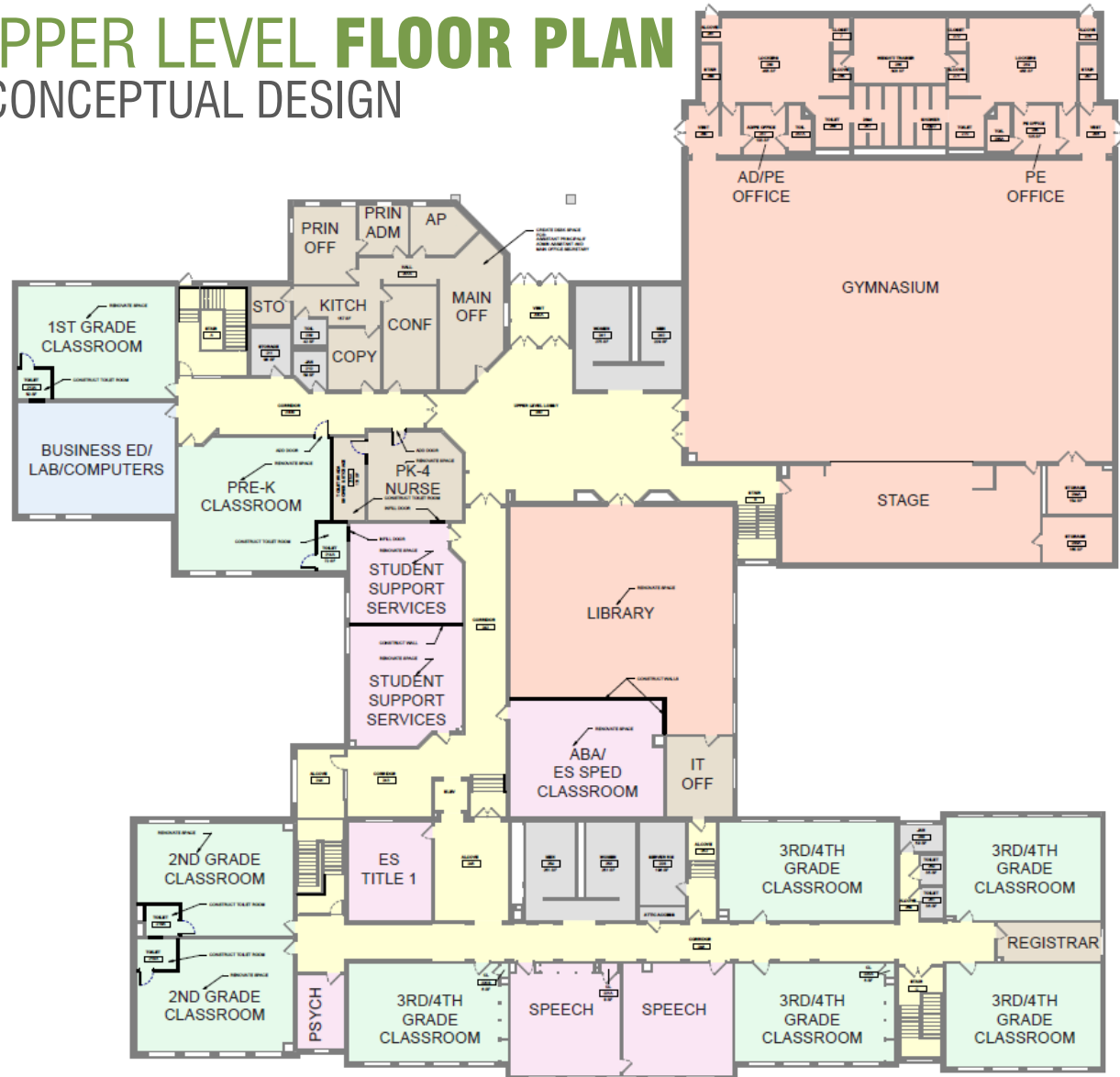
- GENERAL CLASSROOMS
- SPECIALIZED CLASSROOMS
- SPECIAL SERVICES CLASSROOMS
- CORE AREAS
- EDUCATIONAL SUPPORT AREAS
- FACILITY SUPPORT AREAS
- CIRCULATION

NOTES

1. DOOR TO EXTERIOR WILL NEED TO BE ADDED TO CAFETERIA, ART, AND MUSIC IF USE BY STUDENTS AGES 3-5 YEARS OLD.
2. ONE ART ROOM, MUSIC, GYM AND CAFETERIA OKAY FOR ES/MS BUT WILL DRIVE THE SCHEDULE.
3. ALL SPACES SHOWN ON PLAN ARE PART OF THE ES/MUS COMBINED PROGRAM. THE FOLLOWING REQUIRED PROGRAM SPACES ARE MISSING AND SPACE IS NOT AVAILABLE FOR THEM WITHIN THE EXISTING BUILDING:

- **(2) KINDERGARTEN CLASSROOMS** WITH BATHROOMS AT 1,000 SF EACH
- **(1) FIRST GRADE CLASSROOM** WITH BATHROOM AT 900 SF
- **(3) ES SPED CLASSROOMS** AT 450-500 SF EACH
- **INTERVENTION/IN SCHOOL SUSPENSION ROOM** 300 SF
- **CODING CLASSROOM** 900 SF
- **MS ASSISTANT PRINCIPAL OFFICE** 150 SF

MISSING PROGRAM SPACES: TOTAL APPROX. 5,750 SF



SUMMARY OF FINDINGS

CONSOLIDATION ANALYSIS/CONCEPTUAL DESIGN

POPULATION AND PROGRAM:

- A combined ES/MS would have 393 students (**100 more than the current PMHS population**)
- One art room, music room, gym, and cafeteria **will drive the schedule and number of offerings**

SITE ANALYSIS:

- **Site modifications** for the proposed concept design would require grading, potential retaining walls, site ramps, a new bus drive, and other items to provide separate bus and car drop off and the number of separate play areas required for ES and MS programming
- Separating bus and parent drop-off areas for safety will result in a **30 parking space deficit**
- **Program spaces** that are **not able to be accommodated** on site include: hardscape play areas, 6-8 outdoor play area, outdoor classrooms, and nature trails

CONSOLIDATION ANALYSIS/CONCEPTUAL DESIGN:

- Some existing spaces **do not meet DOE space standards**, such as the **OTPT space**, which is undersized by several hundred square feet
- **Multiple renovations** would be required to achieve the spaces illustrated on the plans
- There would be a **5,750 SF deficit of program space**. The following programs **do not have space** in the floor plan:
 - **(2) K classrooms** with bathrooms at 1,000 SF each
 - **(1) First grade classroom** with bathroom at 900 SF
 - **(3) ES SPED classrooms** at 450-500 SF each
 - **Intervention/In-School Suspension Room** at 300 SF
 - Unified Arts **Classroom for Coding** at 900 SF
 - **MS Assistant Principal Office** at 150 SF



HARRIMAN



Questions & Answers